

## Oven Ventilation (MF-DWKL)

Duct Work and Flue Pipe



### Overview

Our exhaust system is the perfect chimney for pizza ovens. Our factory built exhausts are suitable for use in the removal of smoke and grease laden vapors from commercial, institutional, industrial, and similar type of applications where Marra Forni ovens are in use.

The modular exhaust systems incorporate a steel to steel conical joint and clamp system for quick and easy assembly in the field. The conical joint is tapped in place creating a gas and liquid tight seal where sealant is not needed. The conical joints have a 2.2" wide steel to steel surface overlap area at each connection allowing greater stiffness, sealing, and durability over ½" flange to flange systems.

### Required UL Listings

- UL-103 Standard, IO00F Building Heating Appliance Chimney
- UL-103 Standard, Additional 2100F Type HT Listing
- UL-2561 Standard, 1400F Chimney Listing
- UL-103 & UL-2561 Additional Positive Pressure Listing to 90" WC
- UL-1978 Standard, Grease Duct

### Standard Features

- All required UL Listings
- All Type 444 stainless
- 25 years Warranty
- Easy access for cleaning
- 1½" thick SuperWool Plus insulation

### Enclosures

Marra Forni's ventilation is intended to be installed unenclosed or with noncombustible enclosures.

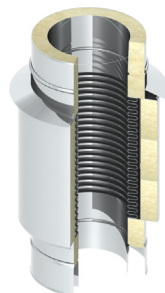
If the Chimney or Grease Duct passes through any zone or story of a building outside of which the connected appliance or hood is located, it is to be enclosed in non-combustible construction having a fire rating equal to or greater than that of the wall or ceiling through which it passes. Check with the local code authority (AHJ) for material with an appropriate fire rating.

Where, according to local code, no chase enclosure is required, Model MF-DWKL may be installed adjacent to a wall of combustible construction at the minimum airspace clearance specified on each pipe section and in the individual Listing as shown in the following tables.

### View 1



### View 2



### Certifications



## PROJECT

Project Name: \_\_\_\_\_

Project #: \_\_\_\_\_

Contact Name \_\_\_\_\_

Address \_\_\_\_\_

City \_\_\_\_\_ State \_\_\_\_\_ Zip \_\_\_\_\_

## INFORMATION

Oven Model \_\_\_\_\_

Flue Type \_\_\_\_\_

If roof is not flat, please indicate the pitch.

\_\_\_ Flat roof \_\_\_ Slope: \_\_\_/12

Fan Make/Model \_\_\_\_\_

Fan Type \_\_\_ Marra Forni \_\_\_ Other

Roof Type \_\_\_\_\_

Corrugated Steel, Asphalt or Wood Shingles, Metal Chimney Panel, Etc.  
(to determine venting clearance)

\_\_\_\_\_

\_\_\_\_\_

## NOTES

- Ensure there are no air intakes of the building within 10 feet of where the exhaust will terminate.
- Please attach any photos or a centerline sketch with dimensions.

### MARRA MODEL MF-DWKL UL LISTINGS AND SPECIFICATIONS:

- UL-1978 Standard, Grease Duct for liquid tight joints and 2000°F for 30 minutes
- ULC-S662, (Canadian) Standard for
- Factory-Built Grease
- UL-2561 Standard, 1400F Chimney Listing/
- ULC/ORDC959 Industrial Type 760°C Chimney
- UL-103 Standard, Building Heating Appliance Chimney Listing
- ULC/ORD-C959 Industrial Type 540°C Chimney
- UL-103 Standard, Additional Positive Pressure Listing up to 90° W.C.
- UL-103 Standard, Additional Type HT Listing, 1000°F and 2100°F for 10 minutes
- 0.035" Thick 444 stainless steel inner liner, 1.5" ceramic fiber blanket compressed to 1.25", and 430 stainless steel outer jacket with all stainless steel supports and accessories.

