

Owner's Manual

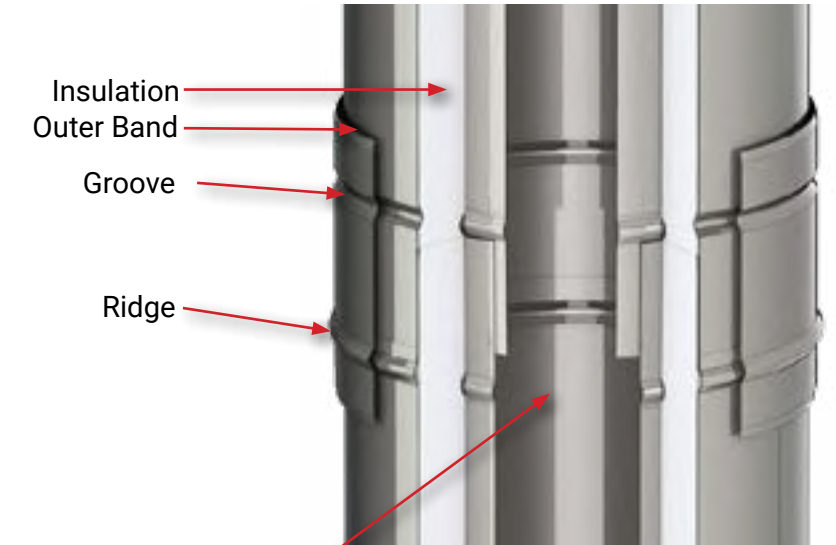
Exhaust System

Marra forni

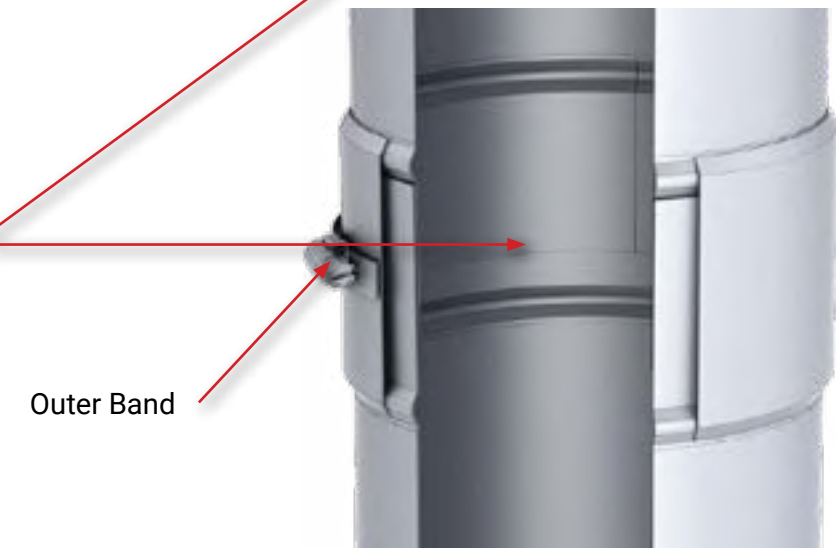
INSTALLATION

Marra Forni Model DWKL and SWKL

- Cut away view of the joints after joining
 - **DWKL** double wall
 - **SWKL** single wall



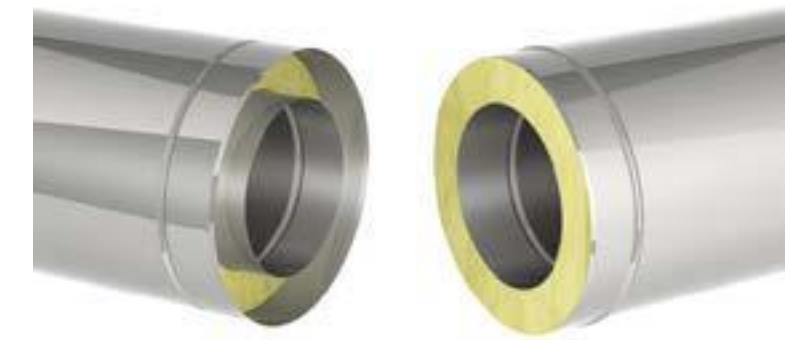
- Conical joint design, high pressure capable (90" WC), no silicone sealant (steel to steel) 2.2" of surface area at each joint



- Close up view of the joints before joining
 - **DWKL** double wall
 - **SWKL** single wall
- Conical joint design, high pressure capable (90" WC), no silicone sealant (steel to steel)

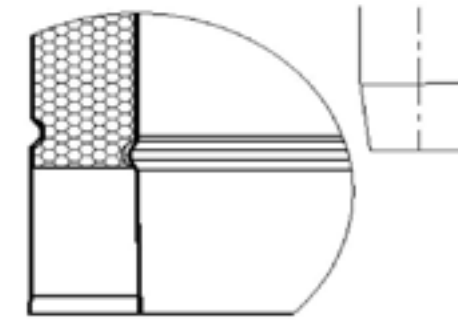


Let's start with the DWKL double wall. The single wall will then need no further explanation.



Male end

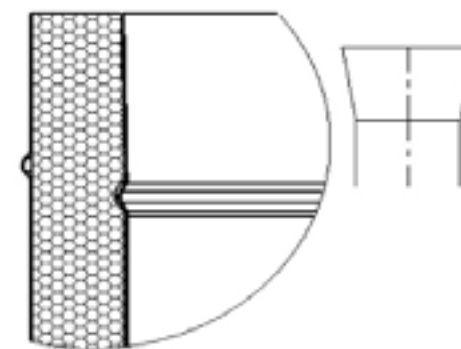
Female end



Male end – inner wall



A Closeup Cross-section of the Marra Forni Model DWKL shows the male and female ends of the conical joint design.



Female end- inner wall



REQUIRED TOOLS

- KL Paste
- Screwdriver
- Board
- 3 Lb Sledge Hammer
- Male unit and female unit to be assembled



Notice-Flow Arrow –

This shows the flue gas flow direction, and will stay consistent during the entire venting route.



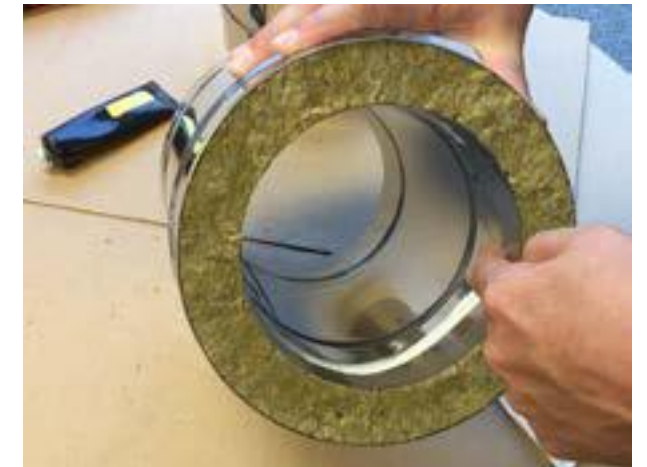
Clean the inside of the female joint connection



Clean the outside of the male joint connection



Apply KL Paste to inside of female joint connection



Proper amount of KL Paste applied to inside of female joint connection.

KL Paste is a lubricant that enables the parts to slide together easier. It also contains microscopic ceramic beads that melt and seal the joints better.



Carefully place next piece in place –align carefully and gently slide into position...



The proper connection is made when there is no space left at the joint



Once in place, press down until there is firm resistance. There should be about 1/4" to 5/8" of space left at the joint



Make sure that the inner liner protrudes only about -1/8" above the insulation



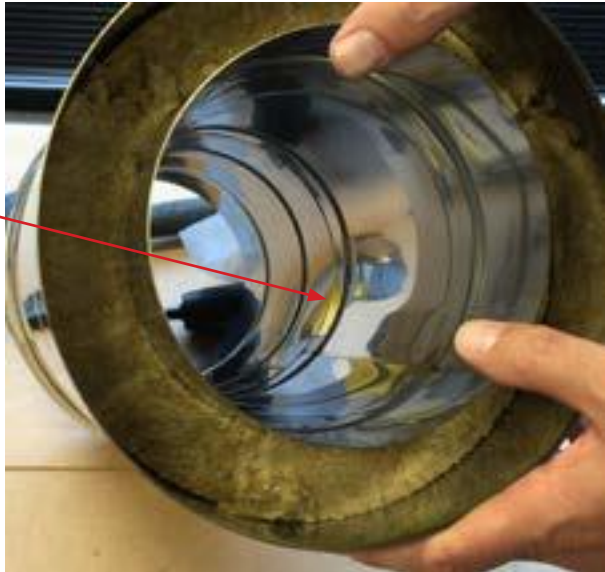
Next, place the Wooden Board over the top of the top piece and tap firmly into place with the hammer until there is no space left at the joint



Move the Outer Band into position and tightendown with the screwdriver. Note that theband can only go on one way-the groove is on top and the ridge is on the bottom. The band will cover the joint at the top and bottom.



If you look on the inside, you will see that the KL Paste has been squeezed out in a little bead, showing you how tight that joint really is...



The finished joint of these two pieces—shows you how quickly and easily you can assemble this beautiful product





Marra Forni