

## Three Door Prep Table MF.GPZ225



### Overview

A well-organized worksurface is a necessity for speedy service. Marra Refrigeration makes stainless steel, granite-topped prep tables that feature refrigerated condiment rails to organize your toppings.

While making pizzas, you're going to need a place to keep the ingredients and put the whole thing together. This is where a quality pizza prep table comes into play. Marra Refrigeration makes excellent pizza prep tables that feature condiment rails to organize all of your toppings. With a good, organized pizza prep table, your team will stay efficient while making pizzas.

### Specifications

Classification: Refrigerator  
Refrigerant: R404A  
Guides: 18

### Weight

Actual Weight: 661 lbs.  
Crated Weight: 786 lbs.  
Weight w/ Rail: 806 lbs.  
Crated w/ Rail: 931 lbs.  
Cubic Feet: 20

### Electrical Requirements

Volts/Hz: 115/60  
Phase: 1  
Full Load (amps): 6.8  
Temperature: 34°F - 55°F  
HP: 1

### Dimensions

Regular: 87.75"W x 31.5"D x 31.25"H  
With Packing: 89.5"W x 33.5"D x 44.25"H

### Standard Features

304 S/S Interior and Exterior  
Granite Worksurface  
Casters Standard  
Digital Controller  
Self-Closing Doors  
2 3/8" Polyurethane Insulation  
Self-Contained Refrigeration  
4 Plastic Dough Trays Per Door

### Optional Functions

Optional Granite Backsplash and Sides  
Condiments Rail

### Approved

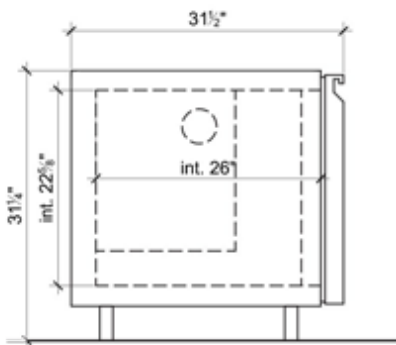


# WE CREATE. WE INNOVATE.

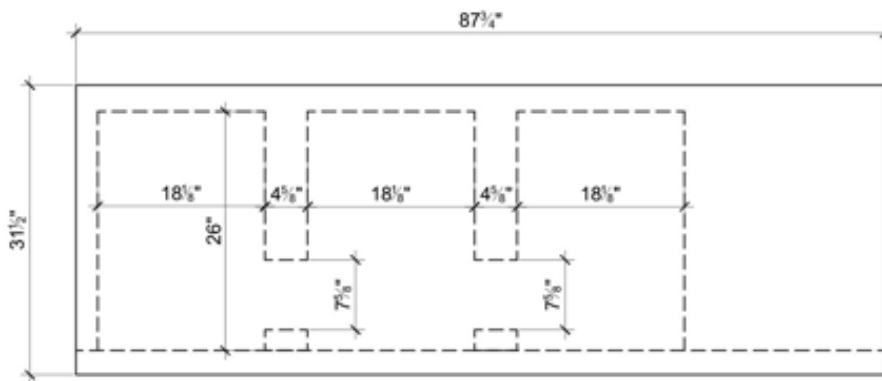
Marra Forni

## Three Door Prep Table MF.GPZ225

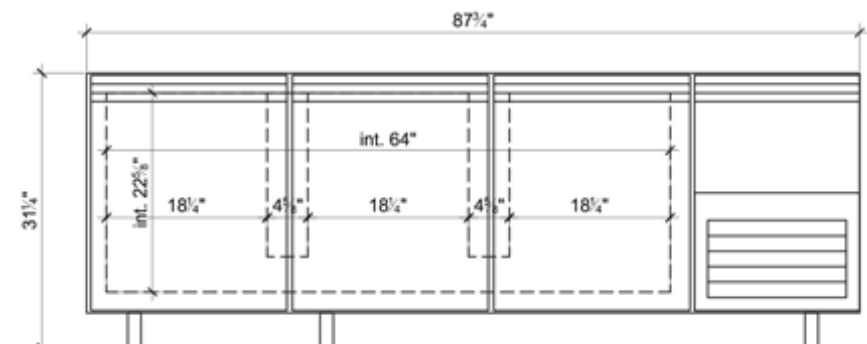
### Side View



### Top View



### Front View



### Legend

- C**-Controls
- E**-Electrical Connection Flexible Cord
- F**-Flue Collar
- G**-Gas Connection
- S**-Storage Shelf

### Notes

An ongoing program of product improvement may require us to change specifications without notice.

All ovens are designed to suit for both commercial and residential usage.

Spec dimensions to be +/- 0.50 inch.

Oven sizes refer to dome interior size.

All Marra Forni ovens are ETL, and VPN approved.

All oven Freight Class 77.5 and must be shipped LTL.

Learn about gas, electrical, venting and clearance requirements at [MARRAFORNI.COM](http://MARRAFORNI.COM)